

# Procédure de mise à jour de la connexion du *Soluscope PAA* avec canule intégrée

## INTRODUCTION

La procédure concerne la mise à jour de la machine *Soluscope Serie 4 PA* pour *Soluscope PAA* avec canule.

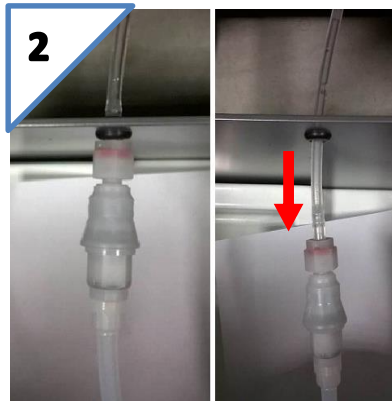
Le port d'équipement de protection individuel est exigé pour suivre cette procédure.



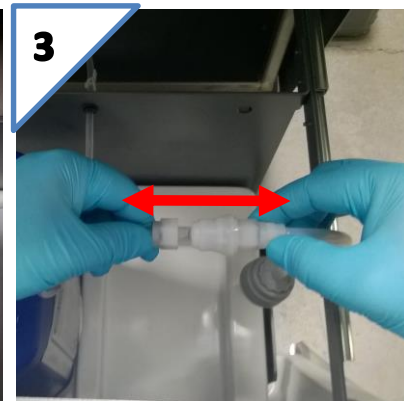
## PROCEDURE



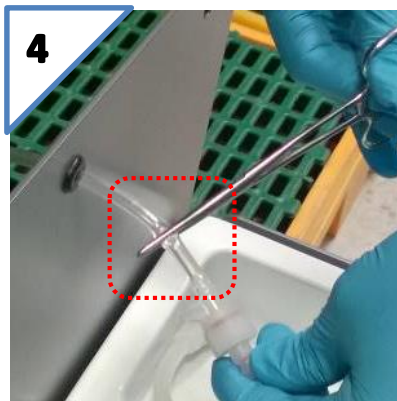
**1**  
Dévisser le bouchon du *Soluscope PAA*



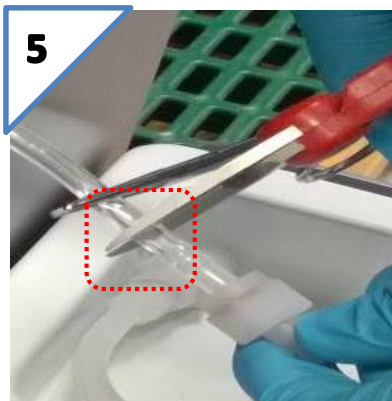
**2**  
Tirer sur l'adaptateur afin de le sortir de son logement.



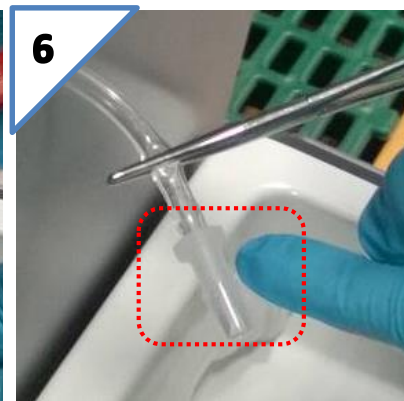
**3**  
Déclipser l'adaptateur du raccord d'origine.



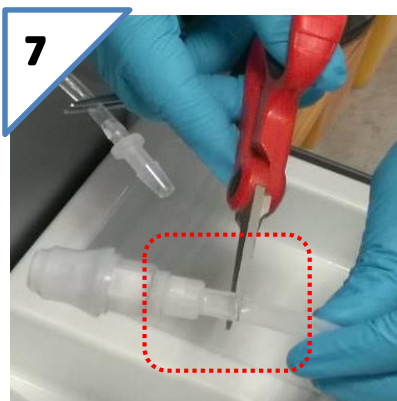
**4**  
Clamper le tube à environ 10cm du raccord



**5**  
Couper le tube entre le clamp et le raccord



**6**  
Placer un raccord réducteur (R-135)



**7**  
Couper le tube côté adaptateur



**8**  
Raccorder le tube silicone sur le réducteur



**9**  
Retirer le clamp et mettre en place la tubulure dans son emplacement

# Updating *Soluscope Serie 4 PA* for *Soluscope PAA* with integrated plunger



## INTRODUCTION

The procedure is aimed at updating the *Soluscope Serie 4 PA* machine for the *Soluscope PAA* with integrated plunger.

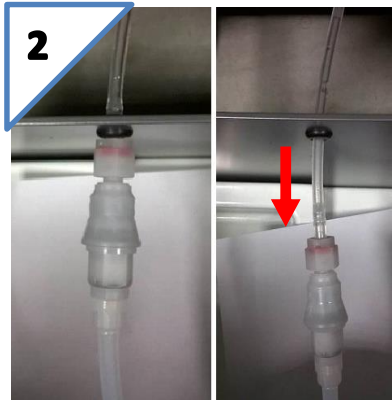
Wearing personal protective equipment is required for this procedure.



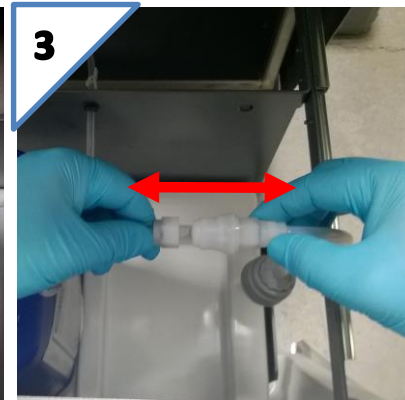
## PROCEDURE



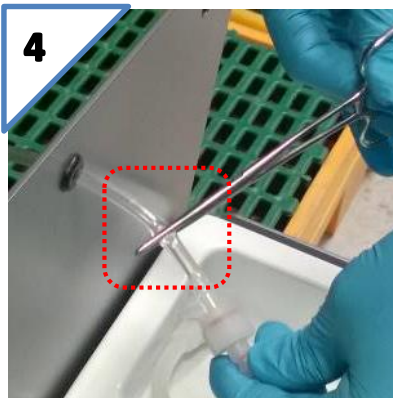
1 Unscrew the cap of *Soluscope PAA*



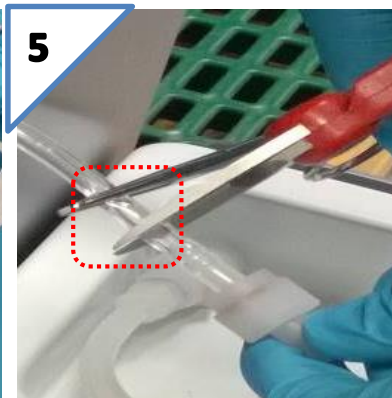
2 Pull the adapter out of its socket



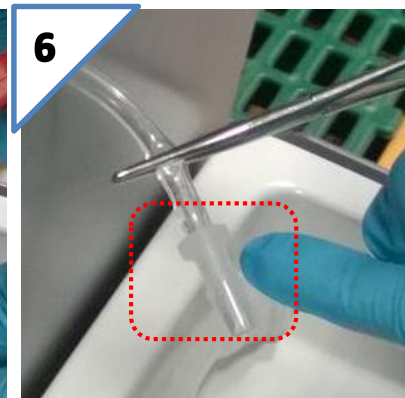
3 Disconnect the adapter from the connector



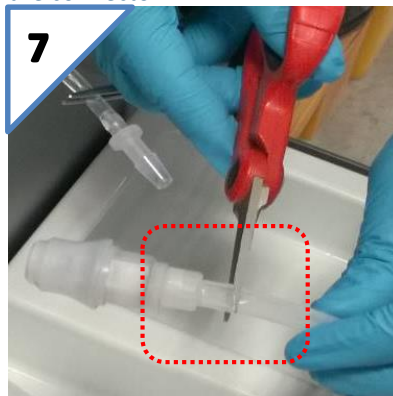
4 Clamp off the tube at 10cm from the connector



5 Cut the tube off between the clamp and the connector



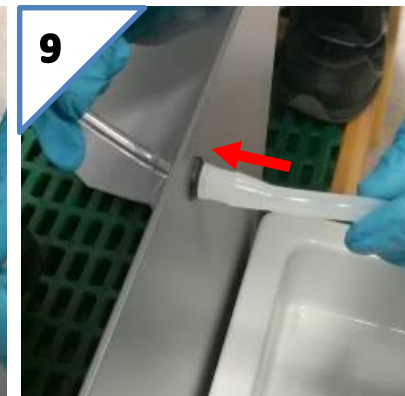
6 Fix the reducer (R-135)



7 Cut off the tube of the adapter



8 Connect the silicone tube to the reducer



9 Remove the clamp and fix the tube in its slot